

6000m Hydrostatic Pressure Test Facility

Key Features

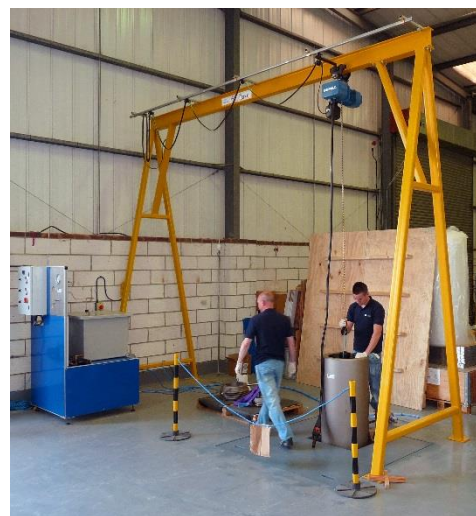
- 340mm diameter x 1500mm long
- 690 bar operating pressure
- Available for half, full-day or longer
- Pressure guage calibrated to national standards
- Designed to EU standards



The 6000 metre rated pressure testing facility which is available to hire. Newly constructed in 2009, the chamber has an internal diameter of 340mm with a useable length of 1500mm. These dimensions allow for most transducer assemblies and many towfish designs to be catered for.

An overhead hoist allows for assemblies of up to 500kg to be easily handled. Convenient access to the facility is provided by roller-shutter doors and the housing is sunk into the ground to ease the handling of Devices Under Test (DUT).

There is the facility to offer penetrator openings through the top end-cap. Pressure recording may be added at a later date if required.



Technical Specification

PHYSICAL SPECIFICATION

Internal diameter	340mm
Internal length	1500mm

FLUID SPECIFICATION

Maximum pressure	690Bar
Test temperature	Ambient
Fluid	Fresh water with corrosion inhibitor
Test duration at high pressure	Indefinite

HOIST SPECIFICATION

Type	Electric chain hoist
SWL	500kg